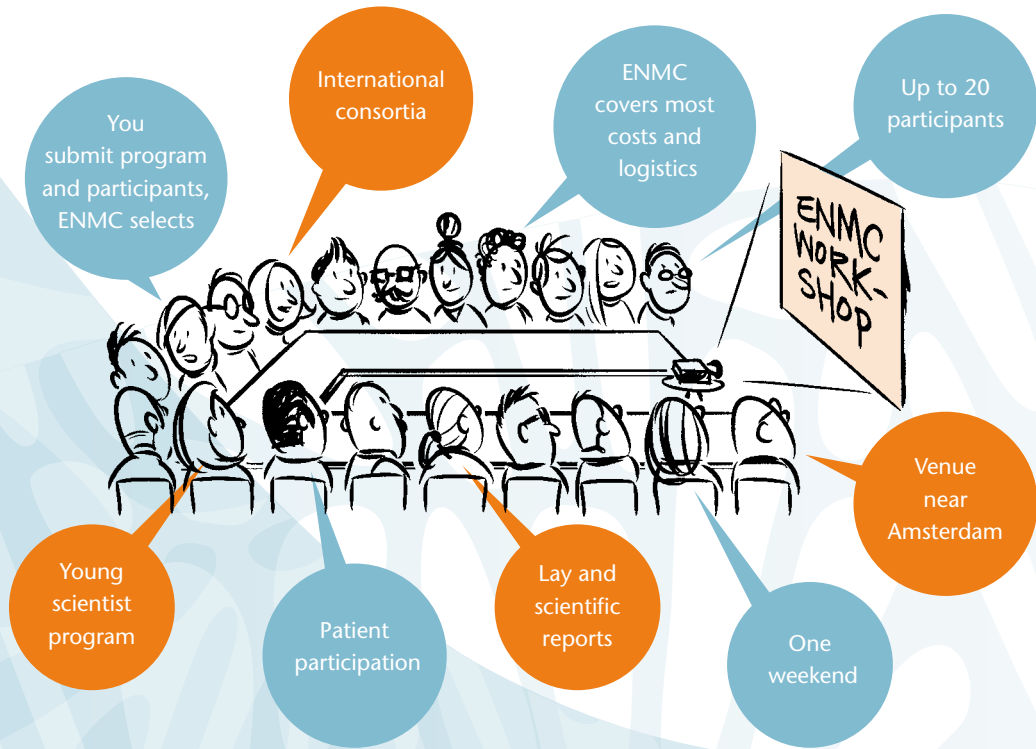


Connecting People

The ENMC: connecting researchers, clinicians and patients worldwide in order to advance progress in the diagnosis, treatment and care of people with a rare neuromuscular condition.

EUROPEAN
NEURO
MUSCULAR
CENTRE



ENMC office

Lt. Gen. van Heutszlaan 6
3743 JN Baarn, The Netherlands
+31 35 5480481
enmc@enmc.org
www.enmc.org

EUROPEAN
NEURO
MUSCULAR
CENTRE